

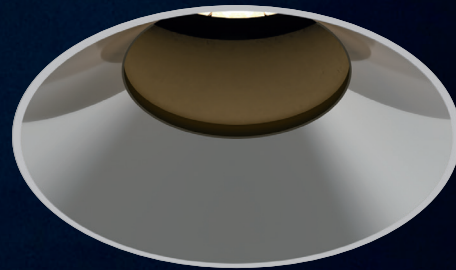
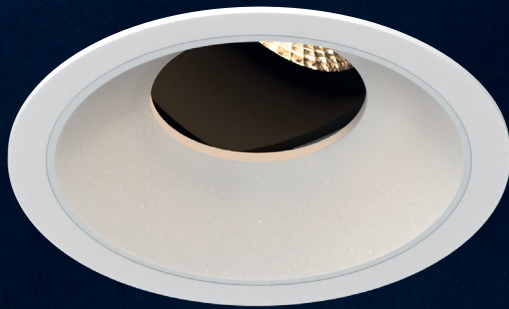
Reduced Glare

ELR®

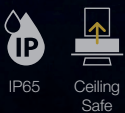
VASARI PRO

DOWNLIGHT SERIES

An expansion to the Vasari downlight series, designed with a narrower trim and deeper aperture for better glare control. The Vasari Pro downlight is equipped with a regression tilt mechanism that allows up to 35 degrees tilting adjustment, offering versatility for various applications.



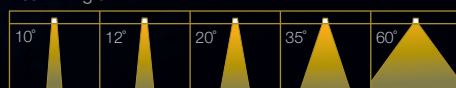
Fixture Features



Module Colour Temperature Variation



Beam Angle



Driver Dimming Variation



VASARI 4 PRO

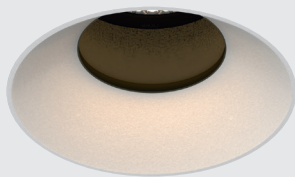
RECESSED ROUND FIX / TILT DOWNLIGHT LUMINAIRE



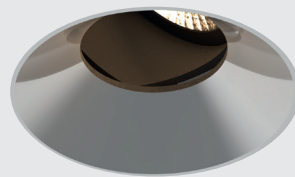
#ROUND
#FIX
#TRIM



#ROUND
#TILT
#TRIM



#ROUND
#FIX
#TRIMLESS



#ROUND
#TILT
#TRIMLESS

TECHNOLOGY AND FEATURES



Advanced Thermal Protection System



Low Flicker, No Risk (IEEE 1789)



Converging Optical Lens Maximising LOR



Ceiling Safe

Reduced Glare

AVAILABLE OPTIONS

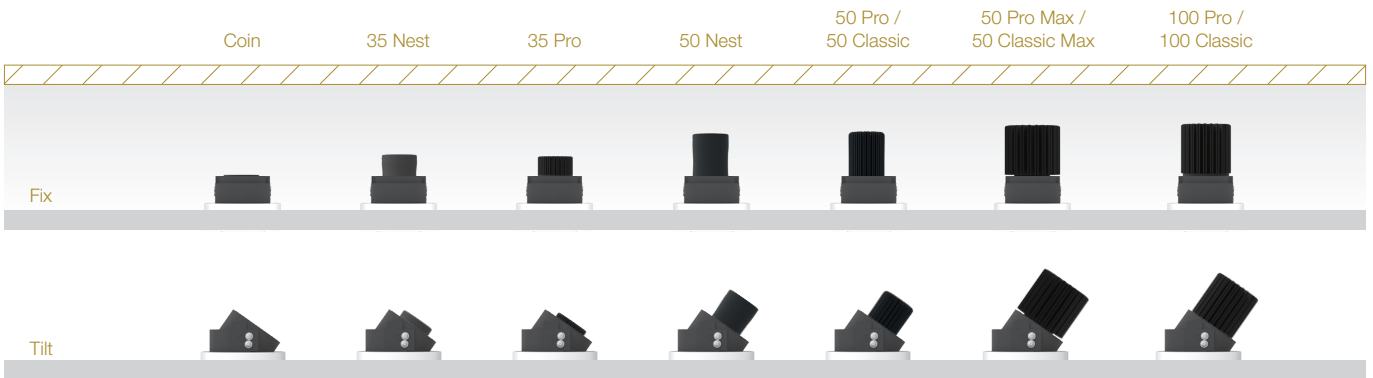
FITTURE COLOUR OPTIONS	Trim Colour Options	Reflector Colour Options					
		MATT WHITE RAL9003	MATT BLACK RAL9011	CHROME	CHROME BLACK	CHROME GOLD	
MATT WHITE RAL9003							
MATT BLACK RAL9011							
ACCESSORIES	Honeycomb Anti-Glare Louvre Soft Lens Linear Spread Lens Comfort Pro Adapter Ring						
LED MODULE	100P/C 50PM/CM 50P/C 35P 50N 35N COIN 35P-HI 50N-HI 35N-HI COIN-HI						
<i>*Drivers for 24CV LED modules are sold separately.</i>	SINGLE CCT 2700K 3000K 3500K 4000K 5000K ProART ProART98	100P / 100C 50PM / 50CM / 50P / 50C / 35P / 50N / 35N / COIN	10°	12°	20°	35°	60°
	ComfySHIFT ComfySHIFT	35P / 50N	10°	12°	20°	35°	60°
<i>**tuneWHITE and flexiK are recommended to be paired with Soft Lens for better colour mixing effect.</i>	WARM DIM WARM DIM	100P	10°	12°	20°	35°	60°
	tuneWHITE tuneWHITE	100P / 50P / 50N / COIN	10°	12°	20°	35°	60°
<i>*Drivers for RGBW LED modules are sold separately.</i>	flexiK flexiK	100P / 50P / 50N / COIN	10°	12°	20°	35°	60°
	RGBW RGBW	100P / 50P	10°	12°	20°	35°	60°
DRIVER DIMMING	(ND) (PH) (AN) (DA)						

VASARI 4 PRO

#ROUND
#FIX
#TILT
#TRIM
#TRIMLESS

SPECIFICATIONS

FIXTURE	
Family Type	Vasari Pro series
Fixture Colours	Matt white, matt black
Reflector Colours	Matt white, matt black, chrome, chrome black, chrome gold
Fixture Materials	Aluminium
Accessories	Honeycomb anti-glare louvre, soft lens, linear spread lens, Comfy Pro
Ingress Protection	IP40
LED MODULE & DRIVER	
Compatible LED Modules	100, 50, 35, COIN series LED modules
Lifetime	Up to 50,000 hours L80 lamp life with LM80 tested LED chip packages
Beam Angles	10°, 12°, 20°, 35°, 60°
Colour Temperatures	2700K, 3000K, 3500K, 4000K, 5000K, ComfySHIFT, Warm Dim, tuneWHITE, flexiK, RGBW
CRI	High Efficiency (CRI-85), ProART (CRI-95), ProART98 (CRI-98)
Driver (Dimming)	Non-dim, phase (leading & trailing edge), 0-10V, DALI



DIMENSIONS (MM)				Height (h)		
ROUND	Trim	Trimless		Module	Fix	Tilt
		Ø111	Ø98		100P / 100C:	148
				50PM / 50CM:	145	150
				50P / 50C:	131	134
				50N:	128	131
				35P / 35N:	102	108
				COIN:	78	87
				50N-HI:	138	141
				35N-HI / 35P-HI:	112	118
				COIN-HI:	88	97

Height increase with accessories:
 Anti-Glare Louvre : Height +6
 Soft Lens : Height +3
 Linear Spread Lens : Height +3
 Comfy Pro : Height +20
 (refer to module driver dimensions)

VASARI 4 PRO

PHOTOMETRICS

100 PRO

Height (m)		Emax (lx)			
		12°	20°	35°	60°
1	E(0°)	12888	10027	5219	2750
	Cone Ø (m)	0.27	0.41	0.70	1.09
2	E(0°)	3222	2507	1305	688
	Cone Ø (m)	0.53	0.82	1.40	2.17
3	E(0°)	1432	1114	580	306
	Cone Ø (m)	0.80	1.23	2.10	3.26
4	E(0°)	805	627	326	172
	Cone Ø (m)	1.07	1.64	2.80	4.34
5	E(0°)	516	401	209	110
	Cone Ø (m)	1.33	2.05	3.50	5.43

Correction Factor: 100P - f = 1.00
100C - f = 0.69

ELR LED Module				100P	100C	
LED Power				23W	17W	
System Power				28W	21W	
Luminous Flux (lm)	Type	Beam Angle	CRI			
			High Efficiency Ra-85	ProART Ra-95		
	Single CCT (3000K)	12°	20°	High Efficiency Ra-85	2490	1710
				ProART Ra-95	2117	1453
				ProART98 Ra-98	1743	1197
		High Efficiency Ra-85		2820	1936	
		ProART Ra-95		2397	1646	
		ProART98 Ra-98		1974	1355	
	35°	High Efficiency Ra-85	2880	1978		
		ProART Ra-95	2448	1681		
		ProART98 Ra-98	2016	1384		
	60°	High Efficiency Ra-85	2880	1978		
ProART Ra-95		2448	1681			
ProART98 Ra-98	2016	1384				

Data are based on 3000K (ProART CRI-95). Nominal data of 2700K and 3500K are shared with 3000K. Higher CCT of 4000K and 5000K will have a nominal data value of 5% higher than published. (f = 1.05) High Efficiency CRI-85 will have a nominal data value of 15% higher than published. (f = 1.17) ProART98 CRI-98 will have a nominal data value of 18% lower than published. (f = 0.82)

Nominal CRI-85, equals to Ra>80-87, R9>0
Nominal CRI-95, equals to Ra>90-97, R9>50
Nominal CRI-98, equals to Ra>97-99, R9>93

100 PRO WARM DIM

Height (m)		Emax (lx)			
		12°	20°	35°	60°
1	E(0°)	11119	8650	4503	2373
	Cone Ø (m)	0.27	0.41	0.70	1.09
2	E(0°)	2780	2163	1126	593
	Cone Ø (m)	0.53	0.82	1.40	2.17
3	E(0°)	1235	961	500	264
	Cone Ø (m)	0.80	1.23	2.10	3.26
4	E(0°)	695	541	281	148
	Cone Ø (m)	1.07	1.64	2.80	4.34
5	E(0°)	445	346	180	95
	Cone Ø (m)	1.33	2.05	3.50	5.43

ELR LED Module				100P	
LED Power				23W	
System Power				28W	
Luminous Flux (lm)	Type	Beam Angle	CRI		
			High Efficiency Ra-85	ProART Ra-95	
	Warm Dim (3100K)	60°	12°	1826	
			20°	2068	
			35°	2112	
60°			2112		

Data are based on maximum output at 3100K. Nominal CRI-95, equals to Ra>90-97, R9>50

VASARI 4 PRO

PHOTOMETRICS

100 PRO tuneWHITE/flexiK



		Height (m)	Emax (lx)			ELR LED Module				100P		
			20°	35°	60°	LED Power		System Power		23W		
1	E(0°)	7471	3889	2049	System Power				28W			
	Cone Ø (m)	0.41	0.70	1.09	Luminous Flux (lm)	Type	Beam Angle	CRI	1786 1824 1824			
2	E(0°)	1868	972	512						tuneWHITE/flexiK (4000K / 6500K)	20°	ProART Ra-95
	Cone Ø (m)	0.82	1.40	2.17							35°	
3	E(0°)	830	432	228		60°						
	Cone Ø (m)	1.23	2.10	3.26								
4	E(0°)	467	243	128								
	Cone Ø (m)	1.64	2.80	4.34								
5	E(0°)	299	156	82								
	Cone Ø (m)	2.05	3.50	5.43								

Data are based on maximum output at highest CCT (4000K / 6500K).
2700K will have a nominal data value of 10% lower than published. (f = 0.90)
1800K will have a nominal data value of 30% lower than published. (f = 0.70)
Nominal CRI-95, equals to Ra>90-97, R9>50

100 PRO RGBW



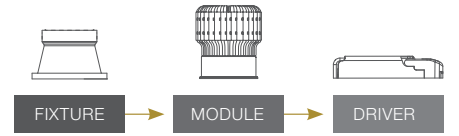
		Height (m)	Emax (lx)		ELR LED Module				100P		
			35°	60°	LED Power		System Power		22W		
1	E(0°)	2077	1095	System Power				26W			
	Cone Ø (m)	0.70	1.09	Luminous Flux (lm)	Type	Beam Angle	CRI	974 974			
2	E(0°)	519	274						RGBW	35°	N/A
	Cone Ø (m)	1.40	2.17								
3	E(0°)	231	122								
	Cone Ø (m)	2.10	3.26								
4	E(0°)	130	68								
	Cone Ø (m)	2.80	4.34								
5	E(0°)	83	44								
	Cone Ø (m)	3.50	5.43								

Data are based on maximum output of all 4 RGBW channels.

Reduced Glare

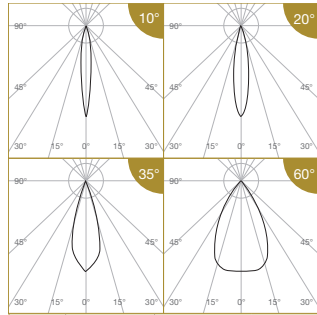
VASARI 4 PRO

MODULAR CONCEPT



PHOTOMETRICS

50 PRO



Height (m)	E(0°)	Emax (lx)			
		10°	20°	35°	60°
1	E(0°)	8185	5304	3119	1206
	Cone Ø (m)	0.19	0.34	0.60	1.15
2	E(0°)	2046	1326	780	301
	Cone Ø (m)	0.38	0.68	1.19	2.30
3	E(0°)	909	589	347	134
	Cone Ø (m)	0.57	1.03	1.79	3.45
4	E(0°)	512	331	195	75
	Cone Ø (m)	0.76	1.37	2.38	4.60
5	E(0°)	327	212	125	48
	Cone Ø (m)	0.95	1.71	2.98	5.75

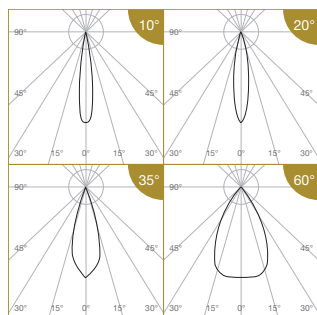
Correction Factor:
 50P (10°) - f = 1.00
 50C (10°) - f = 0.78
 35P (10°) - f = 0.62
 50N (10°) - f = 0.58
 35N (10°) - f = 0.42
 COIN (10°) - f = 0.35
 50PM (10°) - f = 1.69
 50CM (10°) - f = 1.37
 50P-24CV (10°) - f = 0.75
 50C-24CV (10°) - f = 0.62
 35P-24CV (10°) - f = 0.48
 COIN-24CV (10°) - f = 0.28
 50P (20°, 35°, 60°) - f = 1.00
 50C (20°, 35°, 60°) - f = 0.80
 35P (20°, 35°, 60°) - f = 0.71
 50N (20°, 35°, 60°) - f = 0.63
 35N (20°, 35°, 60°) - f = 0.47
 COIN (20°, 35°, 60°) - f = 0.38
 50PM (20°, 35°, 60°) - f = 1.73
 50CM (20°, 35°, 60°) - f = 1.40
 50P-24CV (20°, 35°, 60°) - f = 0.70
 50C-24CV (20°, 35°, 60°) - f = 0.57
 35P-24CV (20°, 35°, 60°) - f = 0.49
 COIN-24CV (20°, 35°, 60°) - f = 0.27

ELR LED Module				50P	50C	35P	50N	35N	COIN	50PM	50CM
LED Power				12W	10W	8W	7.5W	5.5W	4.5W	21W	17W
System Power				15.2W	12.8W	11W	10W	7.5W	6W	25W	21W
Luminous Flux (lm)	Type	Beam Angle	CRI								
	Single CCT (3000K)	10°	High Efficiency Ra-85	1079	847	672	623	457	374	1826	1477
			ProART Ra-95	917	720	572	530	388	318	1552	1256
			ProART98 Ra-98	755	593	471	436	320	261	1278	1034
		20°	High Efficiency Ra-85	1395	1116	995	884	651	530	2418	1953
			ProART Ra-95	1186	949	846	751	553	451	2055	1660
			ProART98 Ra-98	977	781	697	618	456	371	1693	1367
	35°	High Efficiency Ra-85	1410	1128	1006	893	658	536	2444	1974	
		ProART Ra-95	1199	959	855	760	559	456	2077	1678	
		ProART98 Ra-98	987	790	704	625	461	375	1711	1382	
	60°	High Efficiency Ra-85	1440	1152	1027	912	672	547	2496	2016	
ProART Ra-95		1224	979	874	776	571	466	2122	1714		
ProART98 Ra-98		1008	806	719	638	470	383	1747	1411		
Input Power (24CV)				12W	10W	8W			4.5W		
Luminous Flux (lm)	Type	Beam Angle	CRI								
	24CV Single CCT (3000K)	10°	High Efficiency Ra-85	805	664	523			307		
			ProART Ra-95	685	564	445			261		
			ProART98 Ra-98	564	465	366			215		
		20°	High Efficiency Ra-85	977	800	688			381		
			ProART Ra-95	830	680	585			325		
			ProART98 Ra-98	684	560	482			267		
	35°	High Efficiency Ra-85	987	808	696			385			
		ProART Ra-95	839	687	591			328			
		ProART98 Ra-98	691	566	487			270			
	60°	High Efficiency Ra-85	1008	826	710			394			
ProART Ra-95		857	702	604			335				
ProART98 Ra-98		706	578	497			276				

Data are based on 3000K (ProART CRI-95). Nominal data of 2700K and 3500K are shared with 3000K. Higher CCT of 4000K and 5000K will have a nominal data value of 5% higher than published. (f = 1.05) High Efficiency CRI-85 will have a nominal data value of 15% higher than published. (f = 1.17) ProART98 CRI-98 will have a nominal data value of 18% lower than published. (f = 0.82)

Nominal CRI-85, equals to Ra>80-87, R9>0
 Nominal CRI-95, equals to Ra>90-97, R9>50
 Nominal CRI-98, equals to Ra>97-99, R9>93

35 PRO ComfySHIFT



Height (m)	E(0°)	Emax (lx)			
		10°	20°	35°	60°
1	E(0°)	4295	3536	2079	804
	Cone Ø (m)	0.27	0.34	0.60	1.15
2	E(0°)	1074	884	520	201
	Cone Ø (m)	0.53	0.68	1.19	2.30
3	E(0°)	477	393	231	89
	Cone Ø (m)	0.80	1.03	1.79	3.45
4	E(0°)	268	221	130	50
	Cone Ø (m)	1.07	1.37	2.38	4.60
5	E(0°)	172	141	83	32
	Cone Ø (m)	1.33	1.71	2.98	5.75

ELR LED Module				35P	50N
LED Power				8W	7.5W
System Power				11W	10W
Luminous Flux (lm)	Type	Beam Angle	CRI		
	ComfySHIFT (3100K)	10°	ProART Ra-95	706	664
				791	744
				799	752
				816	768

Data are based on maximum output at 3100K.
 Nominal CRI-95, equals to Ra>90-97, R9>50

Correction Factor: 35P CS - f = 1.00
 50N CS - f = 0.94

VASARI 4 PRO

PHOTOMETRICS

50 PRO WARM DIM



Height (m)		Emax (lx)				ELR LED Module																
		10°	20°	35°	60°	50P		35P	50N	35N	COIN											
1	E(0°)	6469	5325	3131	1211	LED Power		12W	8W	7.5W	5.5W	4.5W										
	Cone Ø (m)	0.27	0.34	0.60	1.15	System Power		15.2W	11W	10W	7.5W	6W										
2	E(0°)	1617	1331	783	303	Luminous Flux (lm)	Type	Beam Angle	CRI	1062	706	664	490	398								
	Cone Ø (m)	0.53	0.68	1.19	2.30																	
3	E(0°)	719	592	348	135										Warm Dim (3100K)	10°	ProART Ra-95	1190	791	744	549	446
	Cone Ø (m)	0.80	1.03	1.79	3.45																	
4	E(0°)	404	333	196	76																	
	Cone Ø (m)	1.07	1.37	2.38	4.60																	
5	E(0°)	259	213	125	48	35°	1229	816	768	566	461											
	Cone Ø (m)	1.33	1.71	2.98	5.75																	
	E(0°)											60°										
	Cone Ø (m)																					

Correction Factor: 50P WD - f = 1.00
 35P WD - f = 0.66
 50N WD - f = 0.63
 35N WD - f = 0.46
 COIN WD - f = 0.38

Data are based on maximum output at 3100K.
 Nominal CRI-95, equals to Ra>90-97, R9>50

50 PRO tuneWHITE/flexiK



Height (m)		Emax (lx)			ELR LED Module												
		20°	35°	60°	50P		50N	COIN									
1	E(0°)	4160	2446	946	LED Power		12W	7.5W	4.5W								
	Cone Ø (m)	0.34	0.60	1.15	System Power		15.2W	10W	6W								
2	E(0°)	1040	612	236	Luminous Flux (lm)	Type	Beam Angle	CRI	930	558	335						
	Cone Ø (m)	0.68	1.19	2.30													
3	E(0°)	462	272	105								tuneWHITE/flexiK (4000K / 6500K)	20°	ProART Ra-95	940	564	338
	Cone Ø (m)	1.03	1.79	3.45													
4	E(0°)	260	153	59													
	Cone Ø (m)	1.37	2.38	4.60													
5	E(0°)	166	98	38	60°												
	Cone Ø (m)	1.71	2.98	5.75													

Correction Factor: 50P TW / FK - f = 1.00
 50N TW / FK - f = 0.60
 COIN TW / FK - f = 0.36

Data are based on maximum output at highest CCT (4000K / 6500K).
 2700K will have a nominal data value of 10% lower than published. (f = 0.90)
 1800K will have a nominal data value of 30% lower than published. (f = 0.70)
 Nominal CRI-95, equals to Ra>90-97, R9>50

50 PRO RGBW



Height (m)		Emax (lx)		ELR LED Module			50P						
		35°	60°	LED Power		12W							
1	E(0°)	1480	572	System Power		15.2W							
	Cone Ø (m)	0.60	1.15	Luminous Flux (lm)	Type	Beam Angle	CRI						
2	E(0°)	370	143					RGBW	35°	N/A			
	Cone Ø (m)	1.19	2.30								569		
3	E(0°)	164	64									60°	581
	Cone Ø (m)	1.79	3.45										
4	E(0°)	93	36										
	Cone Ø (m)	2.38	4.60										
5	E(0°)	59	23										
	Cone Ø (m)	2.98	5.75										

Data are based on maximum output of all 4 RGBW channels.

35 PRO HIGH INTENSITY



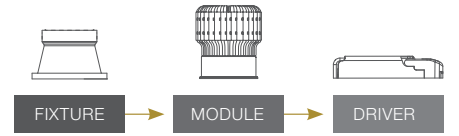
Height (m)		Emax (lx)		ELR LED Module														
		10°		35P-HI		50N-HI	35N-HI	COIN-HI										
1	E(0°)	10860		LED Power		8W	7.5W	5.5W	4.5W									
	Cone Ø (m)	0.19		System Power		11W	10W	7.5W	6W									
2	E(0°)	2715		Luminous Flux (lm)	Type	Beam Angle	CRI	587	552	405	329							
	Cone Ø (m)	0.37																
3	E(0°)	1207										Single CCT (3000K)	10°	High Efficiency Ra-85	499	469	344	280
	Cone Ø (m)	0.56																
4	E(0°)	679																
	Cone Ø (m)	0.74																
5	E(0°)	434		ProART98 Ra-98														
	Cone Ø (m)	0.93																

Correction Factor: 35P-HI - f = 1.00
 50N-HI - f = 0.94
 35N-HI - f = 0.69
 COIN-HI - f = 0.56

Reduced Glare

VASARI 4 PRO

MODULAR CONCEPT



ORDERING MATRIX CHART

Fixture												
Type	Trim Options		Shape		Angle		Colour		Reflector Colour		Accessories	
VASARI-4PRO	T	Trim	RD	Round	FX	Fix	WH	Matt White	WH	Matt White	N	None
	X	Trimless			TL	Tilt	MB	Matt Black	MB	Matt Black	AGL	Anti-Glare Louvre
							CR	Chrome	SL	Soft Lens		
							CB	Chrome Black	LSL	Linear Spread Lens		
						CG	Chrome Gold	CP	Comfort Pro			
								ADT	Adapter Ring***			

***Adapter Ring accessory is necessary when paired with COIN, 35 or 50 series LED module variants.

Single CCT LED Module						Driver		
LED Power	Beam Angle		Colour Temp		CRI		Dimming	
ELR100P	23W	12° 12°	27	2700K	HE	Ra~85	ND	Non-Dim
ELR100C	17W	20° 20°	30	3000K	PA	ProART	PH	Phase
		35° 35°	35	3500K	PP	ProART98	AN	0-10V
		60° 60°	40	4000K			DA	DALI
			50	5000K				
ELR50PM	21W	10° 10°	27	2700K	HE	Ra~85	ND	Non-Dim
ELR50CM	17W	20° 20°	30	3000K	PA	ProART	PH	Phase
ELR50P	12W	35° 35°	35	3500K	PP	ProART98	AN	0-10V
ELR50C	10W	60° 60°	40	4000K			DA	DALI
ELR35P	8W		50	5000K				
ELR50N	7.5W							
ELR35N	5.5W							
ELRCOIN	4.5W							
ELR35P-HI	8W	NS 10°	27	2700K	HE	Ra~85	ND	Non-Dim
ELR50N-HI	7.5W		30	3000K	PA	ProART	PH	Phase
ELR35N-HI	5.5W		35	3500K	PP	ProART98	AN	0-10V
ELRCOIN-HI	4.5W		40	4000K			DA	DALI
			50	5000K				
ELR50P-24CV	12W	10° 10°	27	2700K	HE	Ra~85		
ELR50C-24CV	10W	20° 20°	30	3000K	PA	ProART		
ELR35P-24CV	8W	35° 35°	35	3500K	PP	ProART98		
ELRCOIN-24CV	4.5W	60° 60°	40	4000K				
			50	5000K				

*Drivers for 24CV LED modules are sold separately.

ComfySHIFT LED Module						Driver		
LED Power	Beam Angle		Colour Temp		CRI		Dimming	
ELR35P	8W	10° 10°	CS	ComfySHIFT	PA	ProART	ND	Non-Dim
ELR50N	7.5W	20° 20°						
		35° 35°						
		60° 60°						

example: VASARI-4PRO.T.RD.FX.WH.WH.AGL.ELR100P.35.40.PA.DA

*Custom RAL colour options available.

Warm Dim LED Module						Driver		
LED Power	Beam Angle		Colour Temp		CRI		Dimming	
ELR100P	23W	12° 12°	WD	Warm Dim	PA	ProART	PH	Phase
		20° 20°					AN	0-10V
		35° 35°					DA	DALI
		60° 60°						
ELR50P	12W	10° 10°	WD	Warm Dim	PA	ProART	PH	Phase
ELR35P	8W	20° 20°					AN	0-10V
ELR50N	7.5W	35° 35°					DA	DALI
ELR35N	5.5W	60° 60°						
ELRCOIN	4.5W							

tuneWHITE LED Module						Driver		
LED Power	Beam Angle		Colour Temp		CRI		Dimming	
ELR100P	23W	20° 20°	TW1831	tuneWHITE 1800K-3100K	PA	ProART	DA	DALI
ELR50P	12W	35° 35°	TW1840	tuneWHITE 1800K-4000K				
ELR50N	7.5W	60° 60°	TW2765	tuneWHITE 2700K-6500K				
ELRCOIN	4.5W							

flexiK LED Module						Driver		
LED Power	Beam Angle		Colour Temp		CRI		Dimming	
ELR100P	23W	20° 20°	FK##	flexiK	PA	ProART	PH	Phase
ELR50P	12W	35° 35°					AN	0-10V
ELR50N	7.5W	60° 60°					DA	DALI
ELRCOIN	4.5W							

denotes the first two digits of preferred CCT ranging from 1800K to 6500K by increment of 100K.

RGBW LED Module					
LED Power	Beam Angle		Colour Temp		
ELR100P	22W	35° 35°	RGBW	Red, Green, Blue, White	
ELR50P	12W	60° 60°			

*Drivers for RGBW LED modules are sold separately.